

**EcoLube**

**SARL MICROLUBE**

29 AVENUE DE TUNIS  
94100 SAINT MAUR des FOSSES  
Tél: 01 55 97 14 12  
Fax: 01 55 97 14 13

**Fluid Filter System**

# Contents

<b>APPLICATIONS</b> .....	02~03
---------------------------	-------

<b>AUTO FILTER SYSTEM</b> .....	04~10
---------------------------------	-------

BCM Back-washing Filter.....	04~05
ICM Automatic Metal-edge Filter.....	06~07
ICG Disk Type Automatic Cleaning Filter.....	08~09
Auto Filter Type Chosen Chart.....	10

<b>BAG FILTER SYSTEM</b> .....	11~17
--------------------------------	-------

Standard Multi-Bag Filter.....	11
Standard Single Bag Filter.....	12
Hot Jacket Filter.....	13
Economic Filter.....	14
Manual Filter.....	15
Plastic Bag Filter.....	16
Bag Filter Type Chosen Chart.....	17

<b>FILTER ELEMENTS</b> .....	18~20
------------------------------	-------

---

# APPLICATIONS



## Petrochemicals

Applications: Filtration of lube oils, aviation coal oil, and other biomaterials, recovery of petroleum, separate polymer from benzene, recovery of activator, filtration of catalyzing oil and plasm, filtration of raw materials after open barrel, protective filtration before canned, removal of carbon ink and filter aid liquid, filtration of resin, crylic acid and pectic latex, pump protection, filtration of lube oil, petroleum and fuel additive, filtration of acids, alkalis, solvent.

Client benefits: Low operating cost and energy waste, pipeline anticorrosion, low cost but added benefits through separating oils, mental, scrap material, contamination or solid substance from water, ensure stable quality of products.



## Chemical

Applications: Protective filtration before canned, catalyst recovery, removal of pipe scale, polishing of aqueous process fluids, alkalis, acids and solvents, filtration of emulsions and dispersions, gel removal from resins, separate polymer in the benzene, pump protection. Activated carbon or catalyst removal in the fine chemicals industry is a typical example of a demanding application in chemical processing.

Client benefits: Low cost, largely reduce treatment cost but added benefits through separating oils, mental, scrap material, contamination or solid substance from water, ensure stable quality of products.



## Water Treatment

Applications: Well water filtration, water treatment plants, removal of scale and calcify materials in the water pipes, water source filtration, filtration of chemicals used in the water treatment, protect ultra-membrane and OR-membrane, retain floccules and gelatinous materials, prefiltrate purification liquid before membrane filtration, retain ion exchange resin.

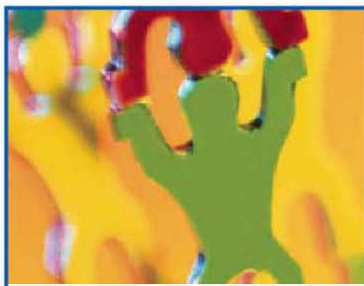
Client benefits: Increase heat exchange, save anti-resistant chemicals, reduce the cost of wastewater treatment, protect membrane system effectively, extend back-flush time of membrane system, extend the life of membrane system.



## Pharmaceutical

Applications: Recovery of active ingredients, catalyst recovery, active carbon purification, filtration of medical used syrup, filtration of galenical extraction liquid, filtration adjust liquid of Ph value, prefiltrate crystalliferous liquid, protein removal from plasma, filtration of gelatins, hormones, active carbon, vitamin extracts.

Client Benefits: Reclaim valuable materials, increase the purification degree of products, improve products quality, recycle rare resource, more save, reduce labor cost and machine stopping cost, reliable filtration, reduce waster, animalcule and suspender in waste water.



## Resins, Plastics, Inks and Coatings

Applications: Oil and polymer filtration, dispersions, polymerization batches, resins for can coatings, plastics compounding, printing ink, plastics processing, paper coatings, high purity ink-jet fluid filtration, filtration of raw materials as resin, etc., remove fibers and gelatins from paints, solvent filtration, filtration of particles beyond normal grade, removal of particles after com-pound reaction, removal of gluey paints coagulates, removal of oils from paints.

Client Benefits: Reclaimed solvent filtration, strengthen polishing degree of the resin, increase efficiency of grinding ball, low investment cost, low operating cost, improve product quality.



## Automotive

Applications: Filtration of pretreatment bath, filtration of E-Coat, top-coat and clearcoat, primer, paint ring line filters, parts cleaning fluids, drawing compounds, lubricants, metalworking fluids and pump intake filters, protective filtration for ultra-filtration, filtration of degreasing craft.

Client Benefits: Reduce cost of machine stopping, eliminate impurity in solid and liquid, reduce holes on paint surface and decrease times of further treatment, strengthen conjoint intensity, elevate the effect of surface finish, extend the life of E-coat, prevent spray nozzles from clogging and ensure the quality stability.



## Electronics

Applications: Circulating filtration of water rubbing wastewater, prefiltration of high-purity water, prefiltration of membrane model cartridge, filtration of cooling water, removal of particles from cop-per and foil eletro-bath, filtration of chemical pharmaceutical plasm, filtration of PCB printing inks, oil removal of copper and foil manufacture, removal of deposits from zinc solution.

Client Benefits: Increase work efficiency, simple operation, increase stability of products, reduce filtration cost.



## Paint and Lacquer

Applications: Clearing suspend curd before use, removal of fiber in external paint, removal of agglomerates, removal of paint coagulates, solvent filtration, removal of globular-grind filling and storage contaminants, filling lines, and paint mixing lines, monomer purification.

Client Benefits: Solvent reborn in re-collecting process, reduce cost of waste water treatment, improve operating efficiency, filtration of high quality products, avoid expensive chemical treatment, low cost and material reborn saved.



## Metal Working

Applications: Filtration of lubricant oil, circulating filtration of cooling water, precious metal recovery, pretreatment system filtration, filtration of rust resistance oil, filtration of hydraulic oil, filtraion of ultra precision burn-ishing oil, oil removal of chip liquid and rinsing liquid, parts cleaning machines use our filter bags for minimizing residual dirt on parts.

Client Benefits: Recovery of valuable catalyst, enhance operating efficiency, low operation cost and wastage, maintain the PH value of bio-materials, extend the life of biomaterials, increase the purification degree of products, protect metal processing facilities, lower operating cost, higher processing efficiency.



## Food and Beverage

Applications: beer filtration, removal of carbon black and filter aid liquid from liquid sugar, removal of particles from edible oils, protective filtration before canned, filtration of process water, syrup, and etc., removal of particles brought in adjustment craft, removal of suspended particles and deposit in beverage.

Client Benefits: Improving polishing degree and purifying degree of products, low investment cost and operating cost, improve product quality.

# AUTOMATIC FILTER SYSTEM

## BCM Back-washing Filter

### Function & Applications

Filtration equipment mainly used in water purification, especially in higher quality of micro-filtration field. The main feature of the filtration equipment is to wipe off sand, clay, rust, suspended solids, algae, biological fouling, corrosion product, the macromolecule bacteria, organic matter and other small particles, oil etc., and achieve the water purification.

### Technique & Features

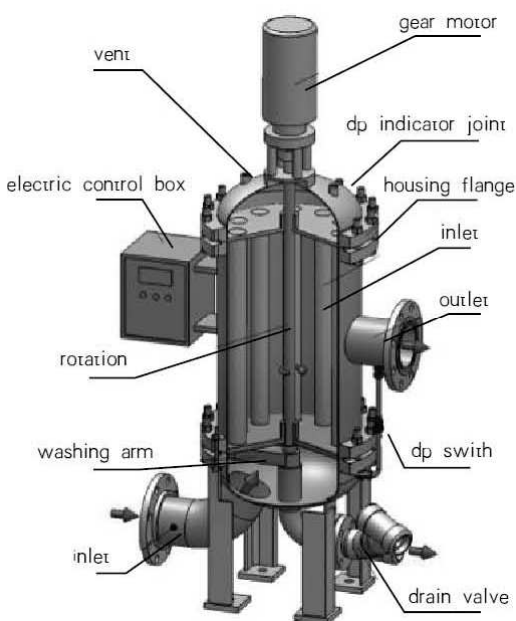
- High filtrating accuracy, stable water quality and supply.
- With its own search and emergency operation function, making automatic back-washing, and can cope with volatile fluctuations without people's operation.
- Filtration equipment control system is responsive, and have a precise operation, can adjust back-washing pressure setting according to different sources and filter accuracy in a flexible way.
- High efficiency and completely cleaning, and the system has a strong recovery, the cartridge can be used permanently without replacement.
- During the back-washing, each cartridge operating in turn, to make sure cartridge completely clean, and meanwhile the other cartridges not being affected and keeping on filtrating.
- Using drain valve, which lasted a short-back-washing, less water consumption, save water, power and energy source.
- Reasonable and compact structural design, small occupational area, installs and removes flexibly, conveniently.
- Less fragile equipment, no consumable material, low operation and maintenance cost, simple operation and management.
- widely being used, suitable for different raw water quality and water requirements.

### Technical Creation

- Using SS304 wedge cartridge, strong strength, high accuracy, corrosion resistance, the micro rating can be up to 25  $\mu\text{m}$ .
- The internal mechanical structure with patented technology achieve a real sense of the high-pressure back-washing functions, which can remove impurities from cartridge easily and thoroughly, cleaning without a corner, no flow decay and protect the filtration efficiency and long life.
- Inlet and outlet flange design, can adjust the direction of rotation arbitrarily, convenient for installation on site.
- Electrical system adapts an integrated control mode, which can achieve the remote control.

### Process Description

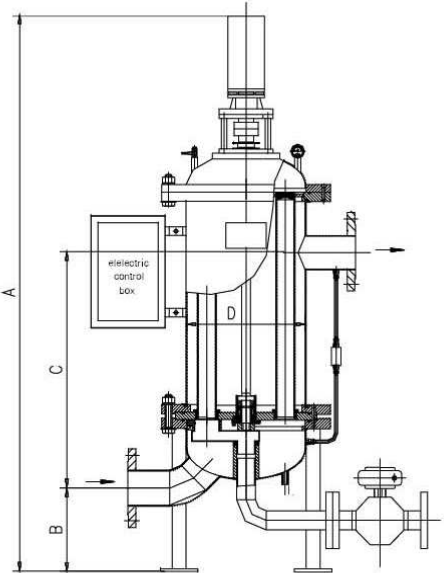
When liquid flows from inside to the outside, contamination particles then collect on the smooth inside of cartridge. And the contamination increases, the differential pressure between the contaminated and clean side of the filter increases. When the differential pressure reaches its pre-set value, the differential pressure indicator send a signal, then the filter start back-washing automatically.



# AUTOMATIC FILTER SYSTEM

## Back-washing

- The gear motor turns the washing arm through the middle rotation, the photoelectric sensor controls washing arm running angle so that the cartridge being cleaned.
- The drain valve is opened, which results in a pressure drop between the drain valve and filtrate side.
- With the pressure drop, fluid flows outside to inside to backwash, the contamination particles collected on the inside of the cartridge are loosened and washed out the filter.
- A typical back-washing time has been set, as soon as the "back-washing time per cartridge" has elapsed, the drain valve is closed, a back-washing of this cartridge is terminated. The gear motor turns the washing arm again to backwash the next cartridge, the drain valve be opened again, and so on for each cartridge.
- All the cartridges are flushed in succession and have been cleaned, the washing arm backs to the original position, a back-washing cycle is terminated.
- Because for each cartridge back-washing, the filtrate flow is not interrupted during the back-washing procedure.



## Back-washing Setting

- Pressure drop setting: There are two set points in the differential pressure indicator of the filter, the first point for back-washing process, the second point for monitoring working process, optional by customers.
- Time setting: With a time device on PLC to set "back-washing time per cartridge" cycle according to customer's request.
- The two settings both exist, and pressure drop setting is in priority.
- Manual Start: When the TEST key is pressed, the filter starts to regenerate the cartridges, which can be used in debugging and overhauling.

## Applications

Domestic water supply, production technology water supply, filter ultra-filtration, reverse osmosis, softening, ion exchange, and other pretreatment, oil field, cooling water, reclaimed water, ground water, surface water turbidity removal purification, central air conditioning, boiler backwater, swimming pools, landscape water, green spray, agriculture irrigation water.

## Specifications

Model	A(mm)	B(mm)	C(mm)	D(mm)	Inlet&Outlet Size	Drain Size	Flow ( m <sup>3</sup> /h )
BF-BCM300	1690	265	640	300	DN50, 80	DN25	50
BF-BCM350	1720	265	660	350	DN80, 100	DN50	56
BF-BCM400	1760	265	680	400	DN100, 125	DN50	100
BF-BCM500	1860	290	715	500	DN150	DN65	150
BF-BCM600	1930	290	755	600	DN200	DN65	250
BF-BCM700	2040	335	755	700	DN250	DN65	400
BF-BCM800	2105	335	770	800	DN300	DN80	500
BF-BCM1000	2220	335	800	1000	DN400	DN80	700
BF-BCM1200	2360	365	825	1200	DN450	DN100	1000
BF-BCM1400	2500	400	850	1400	DN500	DN100	1450

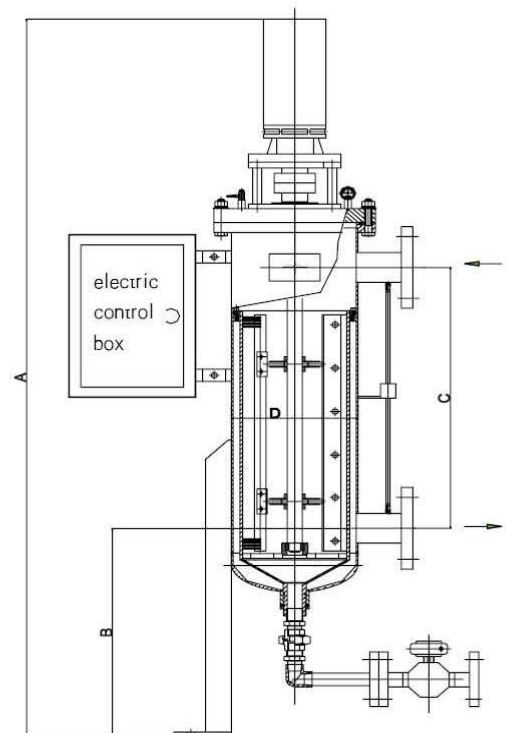
# AUTOMATIC FILTER SYSTEM

## ICM Automatic Metal-edge Filter

### Structure & Working Principle

ICM automatic metal-edge filter contains gear motor reducer, housing, cartridge, scraper filter system, PLC controller, draining valve and so on.

The medium to be cleaned is guided into the filter by inlet, passing from inside to the outside, through the cartridge gap. After filtrating the filtered fluid exits the filter housing at the top opposite the inlet connection, the bigger solids are separated on the surface of the triangular cartridge wires. When it runs a certain time, the cartridge gap will be plugged up by impurities, and meanwhile the differential pressure reaches the pre-set, and then PLC inspects signal and sends out the indication. The gear motor drives the scraper, the particles or agglomerates are skimmed from the surface, thereby, keep the function of cartridge well, keep the cartridge gap clean. When the impurities of the bottom of filter increases, just open the drain valve, the impurities will be emptied successfully, and make the system pressure keep normal. Because of reasonable positions and optimum scraping angle of the filter's scrapers, the rotational scraper drain off the impurities from the filter clearance timely by the gear motor, which avoids the burden of taking down and washing the cartridge, thereby, make the medium being filtered successfully. The scraper system contains stator, PTFE scraper and spring, which are designed for automatic cleaning, and especially for the reasonable spring pressure, maximally reduce the cartridge's abrasion.



# AUTOMATIC FILTER SYSTEM

## Design Feature

- Using automatic continuous on-line filtration, meet the automation operation request.
- System drives by motor, the gear motor runs against the spring actuated scraper, the concentrated solids are drained off simply by the system, and keep the function of cartridge well.
- PLC control function means differential-pressure cleaning, time preset time cleaning, manual cleaning. The differential-pressure is in priority, and be connected with the central control room.
- Validated by practice, the effect of filtration is very nice, and using the wedge cartridge, easy-cleaned, less abrasion.
- In many fields, this filter can replace the traditional bag filter, basket filter, cartridge filter, vibratory sieve filter, frame filter, strap filter and so on.

## Applications

- Industrial cycle water such as iron and steel blast furnace, rolling mill, cast machine, condensate, cooling water.
- Water filter such as desalination, river water, surface water.
- Environmental engineering such as the pre-filtration of bag, cartridge, UF, RO membrane etc.
- Paper making industry such as white water, original water, nozzle protection.
- The filtration of central air condition system, petrochemicals, automobile.

## Specifications

Model	A(mm)	B(mm)	C(mm)	D(mm)	Inlet&outlet Size	Drain Size	Flow ( m <sup>3</sup> /h )	Motor power (KW)
BF-ICM219	1500	450	500	219	DN50	DN25	30	0.25
BF-ICM350	1530	510	500	350	DN100	DN25	50	0.4
BF-ICM450	1800	550	500	450	DN150	DN50	100	0.75
BF-ICM550	1900	625	500	550	DN200	DN50	125	1.0
BF-ICM650	2000	680	500	650	DN250	DN50	150	1.25
BF-ICM750	2200	740	500	750	DN300	DN50	180	1.5



# AUTOMATIC FILTER SYSTEM

## ICG Disc Type Automatic Cleaning Filter

### Product Feature

Full-automatic online continuous filtration, pneumatic drive, a spring-loaded cleaning disc of the filter screen for permanent use, the residue can be collected and emptied when the machine is during filtration.

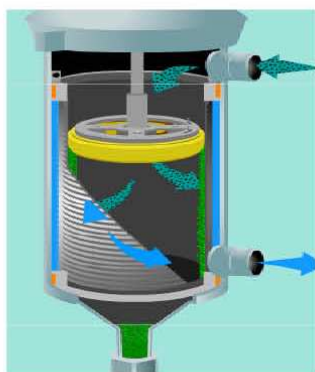


### Main advantages

- No replacement filter screen costs and the disposal expense.
- Disc type cleaned permanent cartridge.
- Reduce the risk of operators contacting the dangerous material.
- Reduce the environmental pollution.
- Reduce the labor demands, no more filter screen changeouts.
- Increase profitability, improve overall system efficiency, reduce downtime.
- Longer life, high accuracy, high erosion resistance.
- Space-saving design, small, compact footprint.
- Collection and removal of contaminant from fluid being filtered, with no interruption of operation.
- Automatic working.

### Working Principle

Using a spring-loaded cleaning disc travels up and down inside the filter screen, removing collected contaminants. The filtrate flows from the top to the down, and from the inside of the screen to the outside. The contaminants trapped on the screen for easy removal and evacuation to the collection chamber. On the downstroke, any remaining contaminants are driven downward to the collection chamber. On the upstroke, the cleaning disc removes contaminants from the screen surface. System fluid flow washes the contaminants downward toward the collection chamber past the cleaning disc.



# AUTOMATIC FITLER SYSTEM

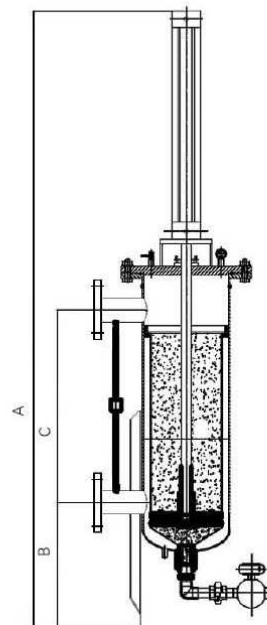
## Operating Parameter

Working temperature: <204°C      Working pressure: <10kg/cm<sup>2</sup>  
 Micron Rating: 25–1500 μm      Treatment: 40m<sup>3</sup>/h

## Applications

Mainly used in high viscosity or high-risk situations such as monomers and polymers, resins, paints, inks, adhesives, lubricants, coolant, cutting fluid, waste water so on.

Successful application: ink, paint, plastic solvent, dyes, paints, latex, polymers, adhesives, latex paint, coolant, solvent-based acrylic enamel paint, ester acid, calcium carbonate, salt water, corn syrup, tea, lactose, edible oil, glucose, lard, chocolate, peanut butter, beverages, toothpaste, shampoo, lubricants, clay mud, fuel oil, sulfuric acid, hydrochloric acid, recycled water, glycol.

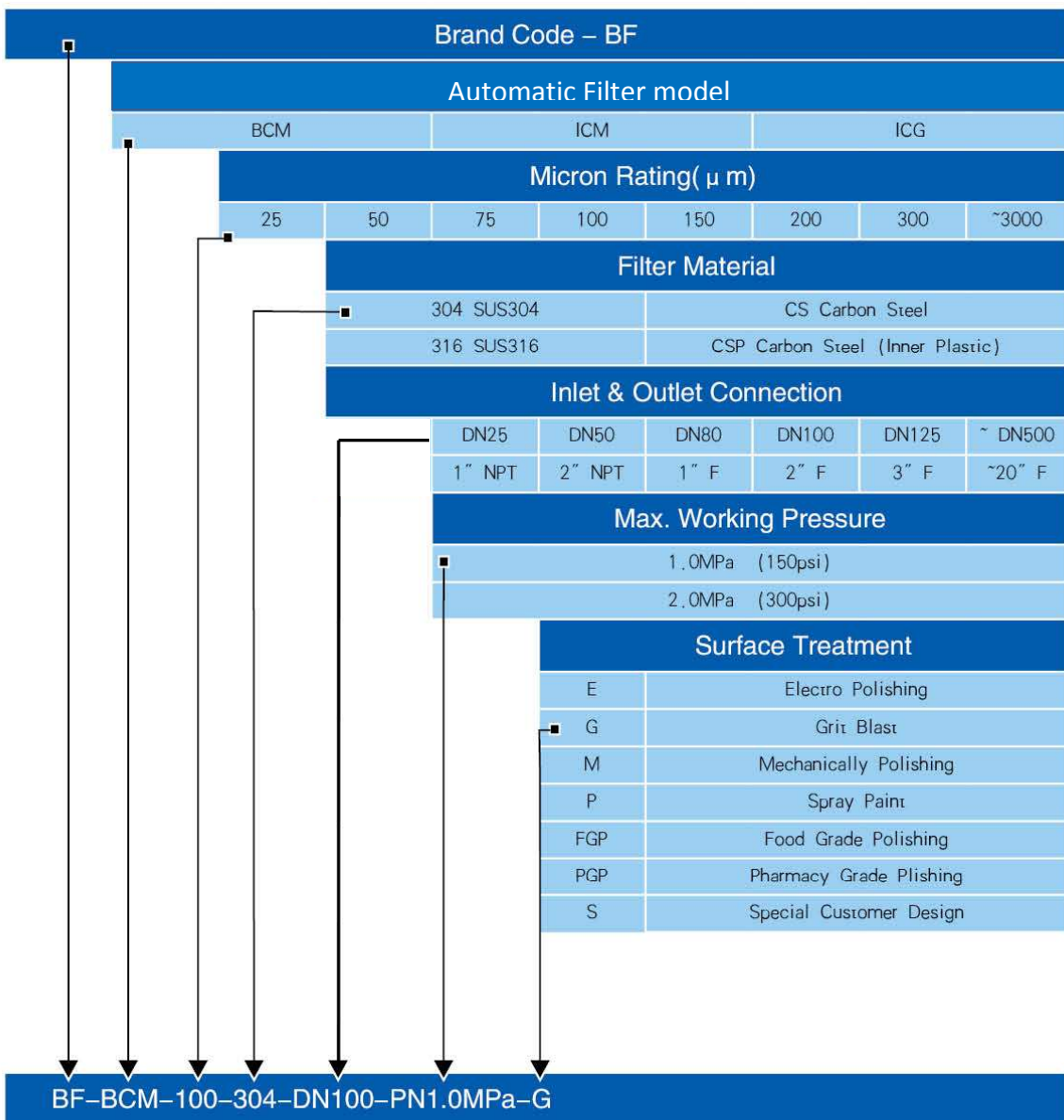


## Specifications

Model	A (mm)	B (mm)	C (mm)	D (mm)	Design Pressure (MPa)	Design Temp. (°C)	Max. Flow (m <sup>3</sup> /h)	Inlet & Outlet Size	Drain Size
BF-ICG219	1595	325	495	219	1.0	200	40	DN50	DN25
BF-ICG159	1585	320	495	159	1.0	200	30	DN40	DN25

# AUTOMATIC FILTER SYSTEM

## AUTOMATIC FILTER TYPE CHOOSEN CHART



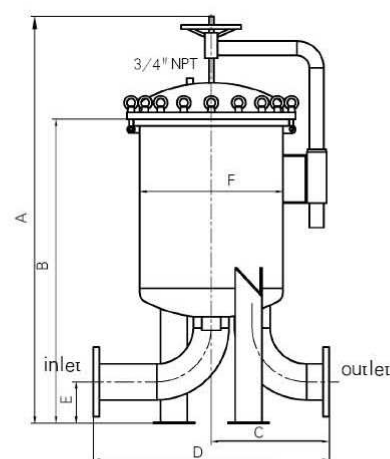
## Standard Multi-Bag Filter

Multi-bag filters offer a wide range of flow capacities. They can contain more impurities, and they are suitable for where change the filter bags after a long time. One single filter, maximum operating flow of 1080m<sup>3</sup>/h. Quick-open design is convenient for daily maintenance.

Provide CS, 304/316 stainless steel construction. Suitable for various of acid & alkaline liquid and nature liquid. Using high level design standard ensures enough corrosion remaining and the highest reliability. Choose 01#,02# filter bags or basket cartridges, changing easily.

Provide heating cover, upload pressure below 10kg, with anti-corrosion painting on inner surface of the filter, to meet different customers, different occasions requested.

Smooth fluid pipeline design, small pressure loss, more energy conservation, outstanding sealed design, with patented ring, prevent liquid bypass. Quicken-open design, convenient maintenance.



### Specifications

Model	Bag Qty	A(mm)	B(mm)	C(mm)	D(mm)	E(mm)	F(mm)	Max. Flow (m <sup>3</sup> /h)	Inlet & Outlet Size
BF-M2	2	1431	1031	300	600	150	406	90	3"-4"
BF-M3	3	1500	1100	350	700	150	500	135	3"-4"
BF-M4	4	1575	1158	380	760	150	558	180	3"-6"
BF-M5	5	1600	1168	400	800	150	608	225	3"-6"
BF-M6	6	1638	1188	430	860	190	660	270	3"-6"
BF-M7	7	1700	1200	455	910	190	710	315	3"-8"
BF-M8	8	1780	1300	480	960	190	760	360	4"-8"
BF-M9	9	1830	1340	505	1010	190	810	405	4"-8"
BF-M10	10	1830	1370	555	1110	190	910	450	6"-8"
BF-M12	12	2000	1400	580	1160	216	960	540	6"-10"
BF-M14	14	2000	1400	610	1220	216	1012	630	8"-10"
BF-M16	16	2100	1500	635	1270	215	1062	720	8"-12"
BF-M18	18	2100	1550	685	1370	215	1162	810	10"-14"
BF-M20	20	2100	1550	710	1420	254	1216	900	10"-16"
BF-M22	22	2200	1600	735	1470	254	1266	990	12"-18"
BF-M24	24	2200	1600	760	1520	254	1316	1080	14"-18"

# BAG FILTER SYSTEM

## Standard Single Bag Filter



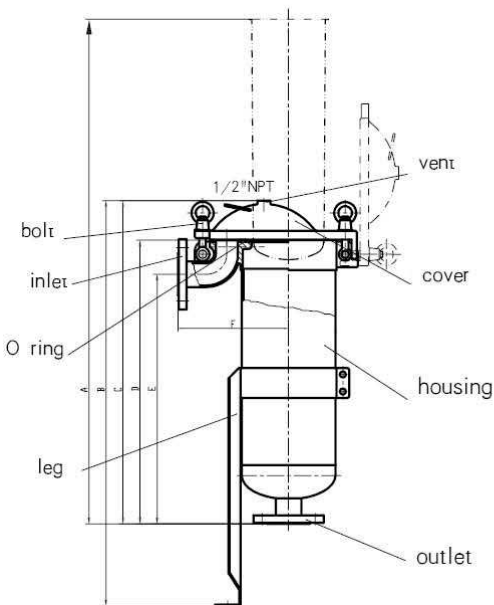
Standard TOP-IN inlet single bag filter, simple and practical, with the most advanced top-in inlet filter structure, provides optimum filtration performance. The most popular single bag filter in the market.

- Positive seal to prevent liquid bypass.
- Great efficient filtration area, higher filtration efficiency.
- Changing filter bags more easily, lower cost.
- Reasonable construction, stable filtration.
- Adjustable-height legs, fit specific area need.
- Unique design, just think for you.

Provides 2# 1# and 4# standard bag filters, suitable for various of acid & alkaline liquid and nature liquid, and meets clients the most strict technical requires.

Provide CS, 304/316 stainless steel construction. Using high level design standard ensures enough corrosion remaining and the highest reliability.

Different material O-ring, meet different fluid and temperature.



### Product Features

- Make full use of the inner space, avoid space-waste of traditional side-in type filter.
- Open shelters can quickly replace the filter bag, unlike the traditional type which must take out the rings before the replacement, reducing the opportunities of secondary pollution.
- The liquid entrance of pipeline is wide and smooth, and the inner of the top cover is trumpet type, after the liquid enters into which can disport pressure automatically. Small impact on filter bags, effective protection for filter bags, prevent accidents from occurring, low pressure drop, filters faster and more stably. Liquid enters into the side-in filter will appears turbulent flow, greater pressure drop, and may result in the filter bag stirring in internal filter, then accidental ruptured.
- Central filter bags used patent ring, Joint with filter closely, no loose, multiple seals, greater effect.

### Specifications

Model	A(mm)	B(mm)		C(mm)	D(mm)	E(mm)	F(mm)	Max. Flow (m <sup>3</sup> /h)	Inlet & Outlet Size
		Max.	Min.						
BF-1S	790	847	723	588	495	455	260	20	DN50
BF-2S	1530	1217	958	958	865	785	260	45	DN50
BF-4S	676	611	466	466	382	332	150	10	1" NPT

# BAG FILTER SYSTEM

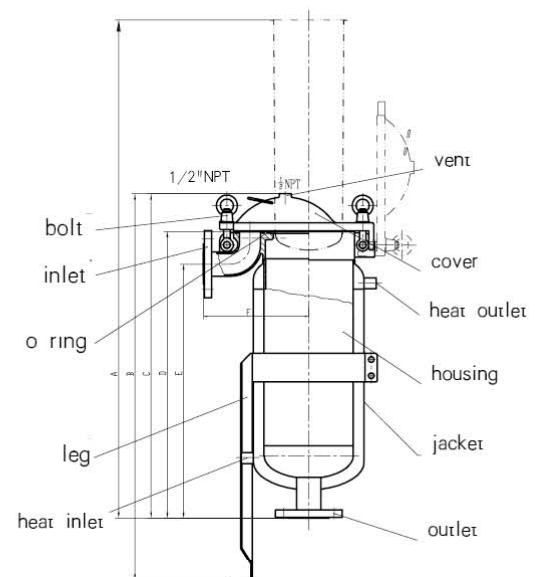
## Hot Jacket Filter

Many liquid will be crystallized or be frozen, to ensure good transportation, we usually preserve heat, it will make filtration more easily or meet the require of next process. Then hot jacket filter is your best choice. The jacket layer, steam and hot oil could be used as the company. We use the most advanced investment-cast top-in inlet construction, provides the highest filtration performance. Provide 304/316 stainless steel construction. Suitable for any kind of acid or alkaline liquid and nature liquid. Using high level design standard, ensures enough corrosion remaining and the highest reliability. Smooth fluid pipeline design, low pressure drop, outstanding seal design, combined with our high capacity filter bags, overcome the shortness of the traditional filter, no liquid bypass. Quick-open design, easy maintenance.



### Features and Advantages

- Jacket design, preserve heat to fluid.
- Maximum operating flow of 45m<sup>3</sup>/h.
- 304/316 stainless steel construction.
- Unique design, advanced filter.
- Maximum operating temperature of 220°C.
- Smooth fluid pipeline design.
- Low pressure drop, Energy-saving.
- Eliminate any kinds of debris.
- Investment-cast, best seal.
- Quick-open design, easily maintenance.
- Suitable to any kind of liquid.
- Adjustable-height legs.



### Specifications

Model	A(mm)	B(mm)		C(mm)	D(mm)	E(mm)	F(mm)	Max Flow (m <sup>3</sup> /h)	Inlet & Outlet Size	Inlet & Outlet of Heat Size
		Max.	Min.							
BF-1J	830	847	723	628	535	455	260	20	DN50	1/2" NPT
BF-2J	1570	1217	998	998	905	825	260	45	DN50	1/2" NPT
BF-4J	698	611	466	466	382	332	150	10	1" NPT	1/2" NPT

# BAG FILTER SYSTEM

## Economic Filter



### Product Description

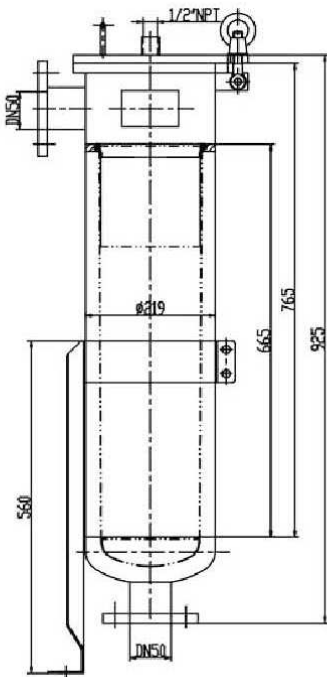
The economic filter is side-in and bottom-out type. Through the pressure in the pipeline press the filter liquids or pumped into the barrels of filter, to filter through the filter bag of filter basket holding, achieve a solid-liquid separation filtering efficiency. Different filter accuracy depends on the accuracy of different filter bags.

As liquid enters into the filter from the top of the bag, making the liquid can be equably distribute in the filter surface the filter bag, and the whole level of constant fluid distribution get the same, the negative effects of turbulence flow is small, get better filtering efficiency.

Side-in bag filter, reasonable structure, good seal, and strong circulation, easy to operate. In particular less bypass can accurately guarantee the accuracy, and can quickly replace the filter bag, reduce the maintenance cost. Machinery gritty process inside and outside the surface, uniformly, easy to clean. It can also meet customer's request, providing a heating cover, adjustable leg or hook, to meet different customer's requests.

### Product Advantages

- Casting a sophisticated production, manufacture with high accuracy, less weld, stable pressure, and simple to operate.
- A typical sealed structure design. Supported by specially designed hot-melt filter bags (plastic or steel ring), can guarantee that the filter itself and filtration process of almost 100% without leakage.
- Simple installation and operation, convenient, small space, widely used and can be used for coarse filter, normal filter or fine filter.
- With the most reasonable, compact pipeline connecting and the polished filter basket, making their own internal filter and connection of the internal pipeline without impurities deposition, high-efficiency, and also the smallest space operations.
- Locking device with stainless steel flying rings and bolt to replace ordinary carbon steel galvanized one to prevent rusty bolts after using for several years.
- Achieve the same effect in filtering, compared with frame fine filters, cartridge filters, water filters and fine pre-filters, relatively our products has low investment costs, long life and low cost.
- In the situation of same rational structure, low operation cost, same filtering efficiency and filtering capacity, economic filter is cost-effective.



## Manual Filter

Manual filter, world-class quality, with SS 304/316, suitable for all kinds of acid and alkali liquids, as well as the neutral liquid solvent. High-level design specifications to ensure adequate corrosion redundancy and the highest reliability. Smooth fluid pipeline design, low pressure drop, more energy conservation, excellent seal designed to prevent bypass leakage. Quick-open design for convenient maintenance.



### Working Principle

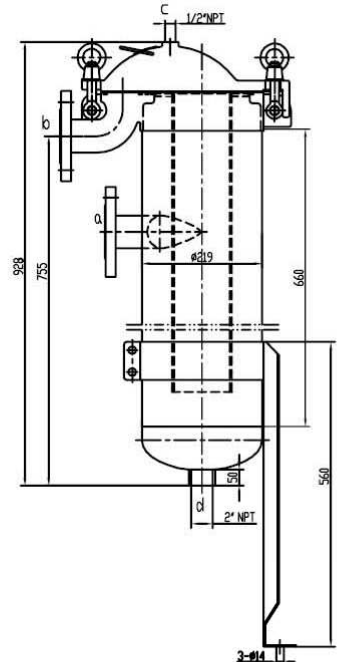
Fluid enters into the filter by tangent direction, then the wedge-shaped filter rotates, fluid filters through the wedge-shaped, clean fluid flow out from the outlet.

### Design Feature

- Innovative structure design, the entrance located to the tangent direction, the fluid rotate around the filter cartridge, fluid reached the requirement exits at the outlet, and particles are trapped and evacuation to the collection chamber.
- Smooth fluid pipeline design, initial low pressure drop, and environmental, energy-saving operation.
- Mould manufacturing covered from top to bottom, quick-open design for convenient maintenance.

### Technical Parameters

- 304/316 stainless steel construction
- Maximum operating pressure of 1.0Mpa
- Micron rating of 25-1500  $\mu\text{m}$
- Inlet and outlet flange of 2" NPT
- Drain of 1" NPT
- Operating temperature of  $-30-200^{\circ}\text{C}$
- Viton o-ring seals
- PTFE packing ring

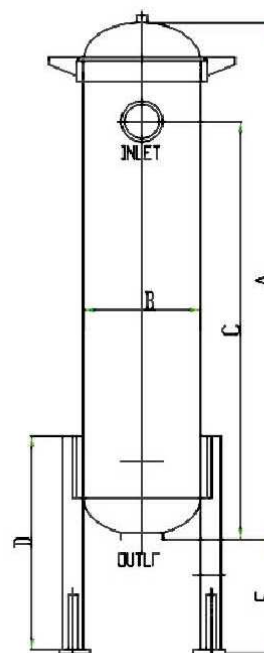




# BAG FILTER SYSTEM

## Plastic Bag Filter

- Unique 100% PP all-in-one filter system, excellent resistance to corrosion, filter system can meet the most rigorous requirements in chemistry.
- Patented design, no bypass.
- Easy to turn-on the upper cap by the knob, convenient to change filter bag, smooth inside, no gap, easy to clean.
- Max. operating temperature of 43°C, max. operating pressure of 0.6Mpa.
- Optional 5# filter bag.



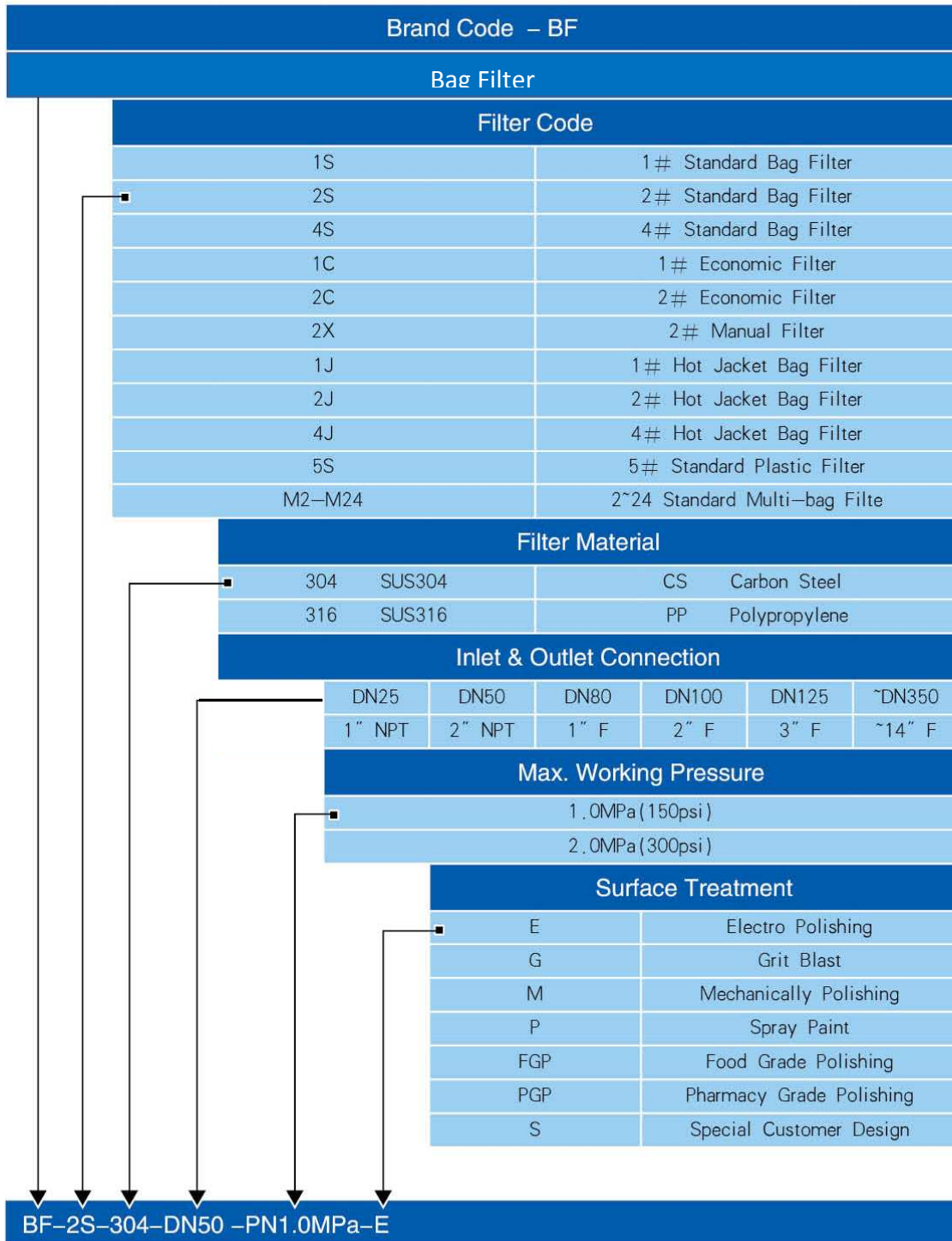
### Specifications

Model	Inlet & Outlet Size	A(mm)	B(mm)	C(mm)	D(mm)	E(mm)	Max. Flow (m <sup>3</sup> /h)
BF-5S	2" NPT	740	168	598	310	212	13

The max. flow refers to the reference of filter liquid, the practical one is decided by the micron rating, viscosity, impurity content, the change of the differential pressure etc.

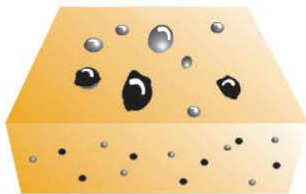
# BAG FILTER SYSTEM

## BAG FILTER TYPE CHOOSING CHART

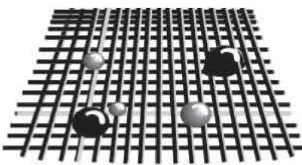


# FILTER ELEMENTS

## Filter Elements



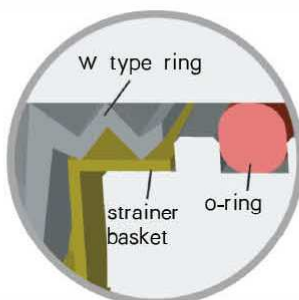
further filtration



surface filtration



monofilament mesh



BF-Ring seal effect chart

As a filter element, filter bag and cartridge is a key in the filtering process, which determines the quality of client's filtering efficiency at a large extent.

Filter bag, choose filter cloth produced by world-renowned manufacturers, supported by patented connect ring, a professional production equipment manufacturers. Production management adheres to the rigorous scientific style, and ensures consistent quality of the filter bag.

Material of filter bag is diverse, with complete specifications. Can be targeted to meet various fields for application, excellent quality make clients get a breakthrough of filtering bottlenecks, improve production technology, improve product quality for a ideal choice.

Excellent efficiency, even apply in food, sanitation and pharmaceutical industries.

### Filter Bag materials

- Felt: polypropylene, polyester, the large capacity of dirt, can remove gelatinous particles.
- Multifilament mesh: nylon, polypropylene, polyester, the absolute value of filtration.
- Monofilament mesh: nylon, polyester, high mechanical strength of the absolute value of filtration.

### Filter Bag Ring materials

- Stainless Steel Ring
- Galvanized Steel Ring
- PP PE Plastic Ring

### Sealing Technique

#### BF-Ring

BF-Ring, with W-shaped press sealing structure, great sealing efficiency because when the pressure increases, the ring and top cover combine closely, and even extend forward to filter's neckline.

Thoroughly create good efficiency of triple-sealing combined with exact filtration.

#### O-Ring

BF-ring, O-ring, guarantee meaningful sealing in absolutely exact filtration.

## Joint Technique

Welded seam filter bag: advanced welded technique, guarantee the best joint strength of the filter bags, avoiding bypass, with the BF-ring, applying to the situation of higher filtration and high efficiency.

Sewn seam filter bag: extremely stringent, firmly durable, thoroughly create good efficiency of triple-sealing combined with sewn seam joint. Pure sewn lines not include silicone lubricant, avoiding the opportunities of secondary pollution on ordinary sewn seam filter bag.



sewn seam filter bag

## Treatment Process

Filter bags are made by fabric filter cloth in the clean production environment, avoiding the opportunities of secondary pollution on filter bag itself. Filter bag made of felt, the surface processed by singeing and so on pressure-treatment, prevent fiber loss caused by secondary pollution.



welded seam filter bag

## Felt Filter Bags

Used in relative accuracy for deep filtration, main products:

Polypropylene: acid and alkali-resistant, max. temperature: 90°C, felt, micron rating of 0.5–200 μm.

Polyester: alkali-resistant, max. temperature: 160°C, felt, micron rating of 0.5–200 μm.

## Mesh Filter Bags

Used in relative accuracy for surface filtration, filtration efficiency up to 100%, main products:

Nylon: acid and alkali-resistant, max temperature: 150°C, multifilament and monofilament mesh, micron rating of 5–1200 μm.

Stainless Steel: high temperature and pressure, clean again and again, micron rating of 25–1200 μm, optional for SS304 and SS316.



nylon filter bag

## High efficiency Microfiber Filter Bags

With polypropylene or polyester meltblown materials composed of multi-layer interception to get absolute deep filter. This kind of filter bags can be made of 2–32 layers, large dirt holding capacity, long life. Add a layer of nylon or polyester material for protective layer to prevent secondary pollution. Provide the most efficient high-performance filter bags, the micro rating can be up 0.2 μm, filtration efficiency up to 99.98%.

## Special Filter Bags

Oil-absorbing bag: made of felt and oil-absorbing materials, with oil-absorbing and filtration function.



stainless steel multi layer strainer basket

# FILTER ELEMENTS

## FILTER ELEMENTS TYPE CHOOSER CHART

